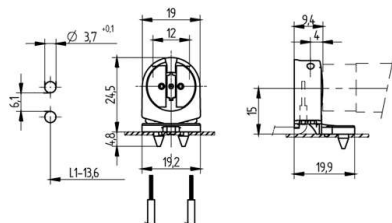


 Create pdf

## Lampholders and starter holders

26.662.2003

### G 5 Push in lampholders



colour	pkg.	wt.	part no.
white	1000	3 g	26.662.2003.50

Approval: additional cULus (120W / 600V)

Wiring: through the body

Lamp centre: 15 mm

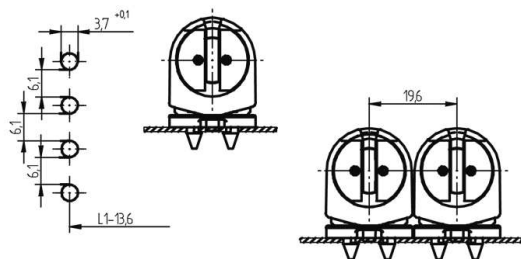
Snap in pins

Housing: PC

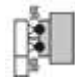

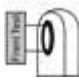


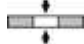

Rotor: PBT

L1-13.6: Recommended dimension - The distance between the cut-outs and the tolerance should be governed by the dimensions of the respective lamps and luminaires.

- Wiring above the mounting plate is also possible
- Snap in pins for IP 40
- A pair of lampholders provides a lamp length tolerance compensation of 2 mm



Example of application

T 130	Tm 110					 18 AWG 0.5 - 1.0 mm <sup>2</sup>	 0.6 - 1.0	
-------	--------	---	---	---	--	--	--	---

Document generated on: We, 8. February 2017 - 14:11